

## EPE551220M BU Oven



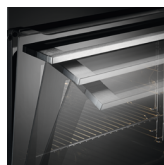
### ADD STEAM FOR CRISPIER BAKING

In addition to all your standard oven functions, the PlusSteam button in this SteamBake oven adds steam at the beginning of the baking process. The steam cooking keeps the dough moist on the surface to create a golden color and tasty crust, while the heat



### A self-cleaning oven

With one touch of the Pyrolytic cleaning function, dirt, grease and food residue in the oven is converted into ash that you can easily wipe off with a damp cloth.



### A luxurious look and feel combined with premium performance

The Soft Closing Door technology built into the soft closing door ensures that the door always shuts softly and silently, to deliver both the look and feel of premium performance.

### More Benefits :

- In the SurroundCook oven all your food will be evenly cooked, every time.
- Hexagon timer display gives you even tighter control over the precise cooking of your dishes
- Safe to Touch Top keeps the door cool and safe to touch

### Features :

- SteamBake
- PYROLUXE® PLUS self-cleaning system, 2 cycles, with reminder function
- SoftMotion™ for a smooth, silent action when closing the door
- MaxiKlasse™ - extra large cavity size
- Electronic timer with timer functions
- Electronic temperature regulation
- Temperature range 30°C - 300°C
- Temperature regulation
- Residual heat indication
- Automatic oven switch off function
- Oven light automatic at door opening
- Easy to clean door
- Wall with Longclean-Emaille
- Runners with easy entry
- SafeToTouch Top
- Cooking functions: Conventional/Traditional cooking, Defrost, Grilling, Moist fan baking, Pizza setting, True fan cooking, True fan cooking PLUS, Turbo grilling
- Electronic Child Lock safety function
- Baking chart on oven door inside
- Cooling fan
- Fast oven heat up function
- Halogen oven lighting
- Fan stops when opening the door
- Demo mode
- Service codes

### Technical Specs :

- Product Number Code : 940 321 317
- EAN : 7332543502189
- Energy Efficiency Class – Main Oven : A+
- Built in height mm : 600
- Built in width mm : 560
- Built in depth mm : 550
- Height total : 594
- Width mm : 595
- Depth mm : 567
- Volume usable, l : 71
- Main colour : Stainless steel with antifingerprint
- Type of plug : No
- Total electricity loading (W) : 11300
- Voltage : 230
- Required fuse (A) : 3x16
- Lamp power - Top Oven : 40
- Weight gross cleaner and accessories with packaging : 38
- Weight net cleaner and accessories no packaging : 37
- Package height : 670
- Package width : 635
- Package depth : 670

### Product Description :